



Rabbit anti Rho Kinase/ROCKII (Paired T396) Polyclonal Antibody

Alternative Name(s): Rho-associated, coiled-coil containing protein kinase 2; ROCK2; ROCK-II

Order Information

- **Description:** Rho Kinase/ROCKII (Paired T396)
- **Catalogue:** 602-850
- **Lot:** See label
- **Size:** 100ug/200ul
- **Host:** Rabbit
- **Clone:** nan
- **Application:** IHC(P), WB
- **Reactivity:** Hu, Ms, Rt, Ck, Bv, Canis

ANTIGEN PREPARATION

A synthetic peptide corresponding to the epitope -VETFP- without a phosphorylation site Thr396 of human RockII protein. This sequence is identical among human, mouse, rat, chicken, dog and bovine

BACKGROUND

Rho A-dependent kinase (ROCKII), or ROK-alpha, is identified a serine/threonine kinase, a downstream effector of the small GTPase Rho, mediating effects of Rho on the actin cytoskeleton, formation of actin stress fibers and focal adhesions, ROCKII alters cardiac myofilament response to Ca^{2+} by mechanisms involving phosphorylation of thin filament proteins. ROCK-II induces a depression in maximum ATPase rate and tension, which is associated with phosphorylation of troponin T (TnT), troponin I (TnI), and myosin-binding protein C (C-protein). The phosphorylation of Rho-kinase at Thr 249, Thr 396 plays important role in G-protein signaling..

PURIFICATION

The Rabbit IgG is purified by Epitope Affinity Purification

FORMULATION

This affinity purified antibody is supplied in sterile Phosphatebuffered saline (pH7.2) containing antibody stabilizer

SPECIFICITY

This antibody recognizes ~165 kDa of human ROCKII without a phosphorylation site ofThr396. It does not react to phosphorylated protein. This antibody also reacts with mouse and rat. The other species are not tested.

STORAGE

The antibodies are stable for 24 months from date of receipt when stored at -20°C to -70°C . The antibodies can be stored at 2°C - 8°C for three month without detectable loss of activity. Avoid repeated freezing-thawing cycles.

APPLICATIONS/SUGGESTED WORKING DILUTIONS*

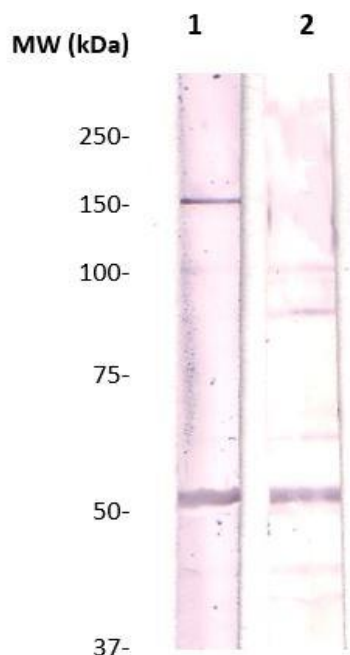
- Western Blot: 0.1-1 $\mu\text{g/ml}$
- ELISA: 0.01-0.1 $\mu\text{g/ml}$
- Immunoprecipitation: 2-5 $\mu\text{g/ml}$
- IHC: 2-10 $\mu\text{g/ml}$
- Flow cytometry: Not tested
- Molecular Weight: 165.0
- Positive Control: Kidney Tissue
- Cellular Location: Cell Membrane

*Optimal dilutions should be determined by researchers for the specific applications.

FOR RESEARCH USE ONLY.

AbboMax, Inc 2528 Qume Drive, Suite 8, San Jose, California 95131, USA
1 408-573-1898 (Tel). 1 408-573-1858 (Fax). www.abbomax.com info@abbomax.com

DATA ATTACHMENTS



Western Blot: The cell lysate derived from 3T3 was immunoprecipitated by Rabbit anti Rho Kinase (Paired T396), (Cat#602-850), then immunoprobed by the same antibody at 1:500 (lane 1). Lane 2 is a negative control. Observed a major immunoreactive band at molecular weight ~165kDa.

REFERENCES

FOR RESEARCH USE ONLY.

AbboMax, Inc 2528 Qume Drive, Suite 8, San Jose, California 95131, USA
1 408-573-1898 (Tel). 1 408-573-1858 (Fax). www.abbomax.com info@abbomax.com